

Warning

The use of a device does not release the user from the obligation to supervise the persons supported by it. It is not authorised for reporting foreseeable, life-threatening conditions.



Scope of delivery

Product variants Bed Exit Control System	Item number
CareSens	990.243xxx
CareSens Plus	770.243.xxx

Accessories supplied:

- Battery CR2450 (ready for use)
- Door hanger sign
- Manual LE 535

Tip: After unpacking, check the delivery for completeness and damage.

Function / versions

The function of the Bed Exit Control System is determined exclusively by the connected call system or the home emergency call device and can be found in their description.

Commissioning / flight mode (external transmitters excluded)

The Bed Exit Control System is supplied in flight or transport mode. For initial commissioning, the DIP switch on the underside of the device must be set to the "ON" position (Fig. 1). The Bed Exit Control System is then ready for operation. The Bed Exit Control System must then be programmed on the corresponding radio receiver.

The device can be activated by pressing the foot slide switch (Fig. 2).

Fig. 1:

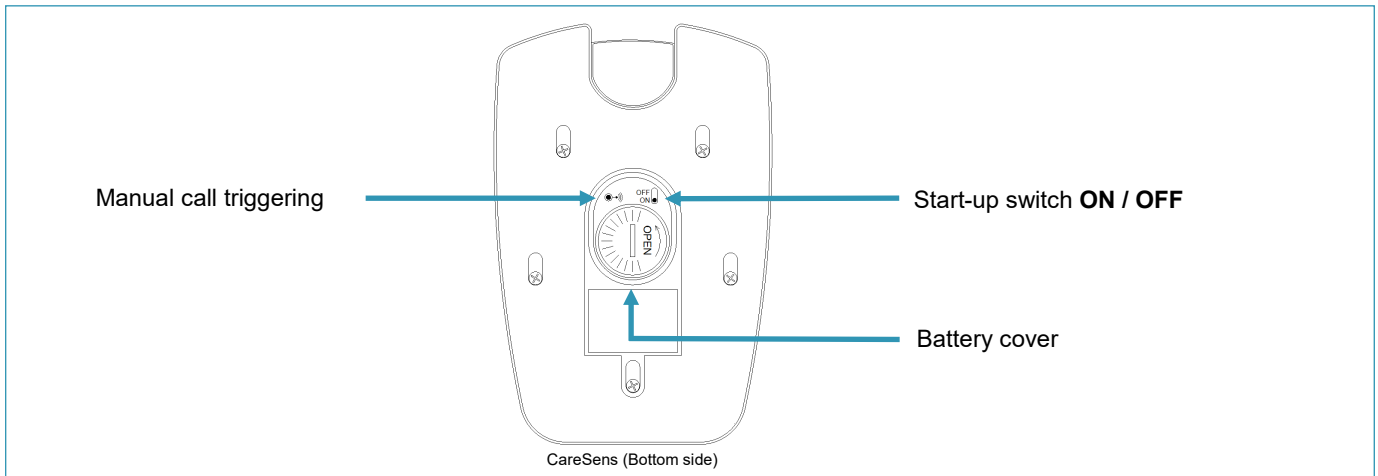
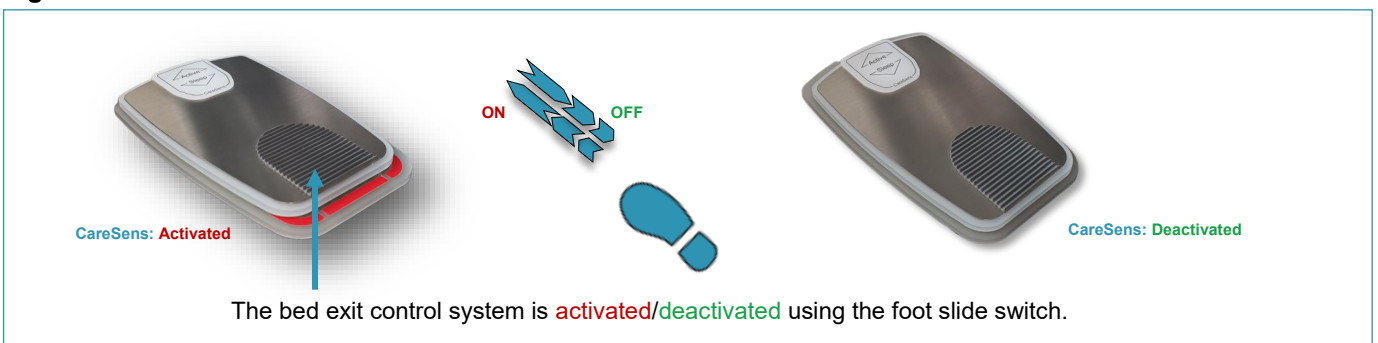


Fig. 2:



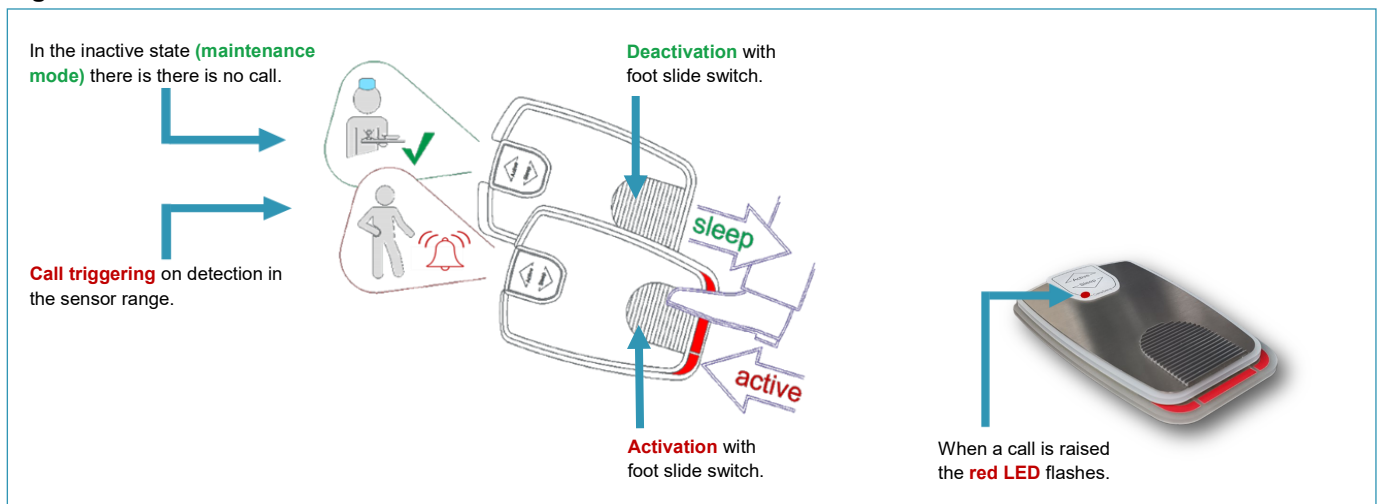
**Operation**

The Bed Exit Control System is used to report a specific floor area to a call system via radio. To do this, the device is placed on the floor with its non-slip underside. The device is positioned and aligned according to the individual selection of the desired monitoring area.

The slide switch **Fig. 3** is operated with the foot. If it is pushed in the direction of the arrow "Active", the device is activated. At the same time, a red mark becomes visible on the lower, narrower side of the foot. Deactivation takes place in the opposite direction, in the direction of the "Sleep" arrow.

If the invisible sensors emerging from the top detect movement, this triggers a paging call in the active state. When triggered, the red LED on the top also lights up once.

**Fig. 3:**



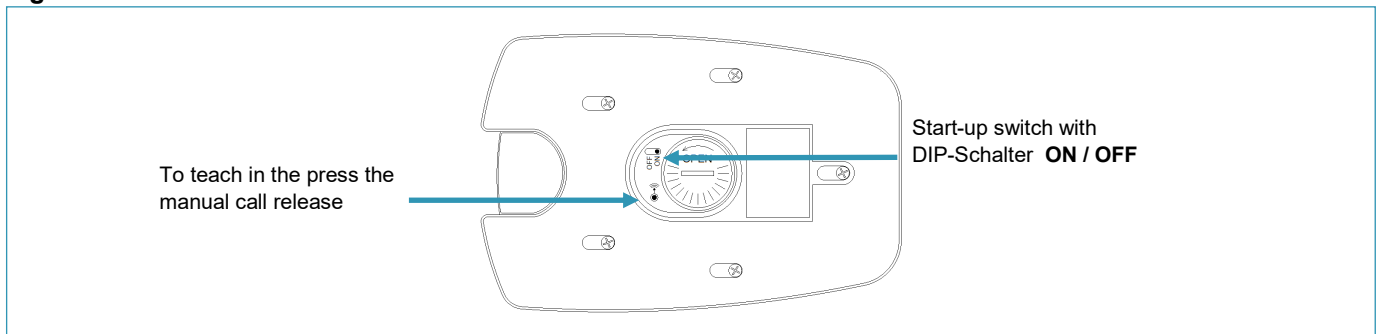
Note: The type of call forwarding and signalling is determined by the receiver and the associated call system. The call forwarding functions and measures can be found in their manuals.

**Programming/unprogramming a Bed Exit Control System on the assigned radio receiver**

Before the Bed Exit Control System can be used, the DIP switch on the underside (see Fig. 4) must be moved from the OFF position to "ON". The system must then be paired with the corresponding radio receiver. To do this, the manual call release must be pressed using a conical object (e.g. biro). The red LED on the top of the device flashes twice. The system can now be paired to a radio receiver. If a bed-exit control system is to be taken out of operation or paired to another receiver, the DIP switch must be set to the "OFF" position.

The procedures for learning/unlearning on the radio receiver are described in the documentation for the respective receiver. Please note that the Bed Exit Control System and the receiver to be tuned in must have the same frequency. The frequency details are shown on the type plate of the bed exit control system and the receiver as a three-digit number labelled "MHz".

**Fig. 4:**



### Range of the radio connection

The radio range complies with the requirements of the technical testing centre of the health insurance companies. A range of approx. 30 metres can be expected inside buildings. However, the range depends largely on the local conditions.



#### Warning

For technological reasons, the Bed Exit Control System - as with all radio-based call detectors - cannot guarantee absolutely secure radio transmission.

This physical circumstance must be taken into account when using the system.

### Regular measures

We suggest a weekly inspection with test triggering under observation of the signalling LED(s), if available).



#### Important

**Carry out the regular checks carefully.**

**Replace worn/damaged parts immediately.**

**In the event of damage or malfunction, do not use the system until it has been repaired.**

### Cleaning

We recommend using a soft, slightly damp cloth with a little washing-up liquid, if necessary with the addition of a disinfectant. Never use abrasive cleaning agents. Only use disinfectants in accordance with EN 16615 or the VAH list.

Technical data	
Name:	<b>Bed Exit Control System CareSens / CareSens Plus</b>
Function:	<b>Non-slip and non-slip wireless bed stand-up monitor</b>
Control element:	<b>Foot slide switch for activation/deactivation</b>
Sensor range:	<b>approx. 5 m</b>
Display:	<b>Red LED as function display</b>
Radio range:	<b>up to approx. 30 m</b> inside buildings; depending on the local conditions, sources of interference and building fabric
Operating frequency:	<b>869,2125 MHz</b> Safe social alarm frequency with EU approval
Operating voltage:	<b>3V / 560 mAh Battery</b> - life up to 2 years when triggered once a day
Protection class:	<b>IP53</b>
Dimensions (WxLxH):	<b>approx. 120 x 180 x 12 mm</b>
Weight:	<b>approx. 310 g</b>
Standard fulfilment:	<b>DIN/VDE 0834</b> (only with radio receiver series <b>VarioRec 7</b> ) and <b>DIN/EN 50134</b>

Item number	Compatible radio receivers for CareSens / CareSens Plus
<b>770.624.08</b>	<b>VarioRec 7 flush-mounted radio receiver</b>
<b>770.624.xxx</b>	<b>VarioRec 7 radio receiver</b> (xxx = with specific, call system-dependent connection link)
<b>990.624.xxx</b>	<b>VarioRec 6 radio receiver</b> - only in accordance with DIN/EN 50134 (xxx = with specific, call system-dependent connection)
<b>990.626.04</b>	<b>VarioRec 6 alarm receiver</b> - only in accordance with DIN/EN 50134
<b>990.626.03</b>	<b>VarioRec 6 - Radio-controlled socket outlet</b> - only in accordance with DIN/EN 50134

### Warranty

The manufacturer is not liable for damage caused by improper or unintended use. Within the statutory warranty period, we will remedy defects in the appliance caused by material or manufacturing faults free of charge by repair or replacement. The guarantee is invalidated in the event of tampering or improper handling. It does not apply to the wear and tear of moving parts.

### Service address

Please contact the supplier of your call technology equipment.

### Disposal instructions

Old appliances and batteries must not be disposed of with household waste. Dispose of old appliances, old batteries and packing material in accordance with the applicable laws and disposal regulations.



The adjacent symbol indicates electronic devices that must be collected separately from household waste and recycled in an environmentally friendly manner. Old appliances and batteries may contain harmful substances that can damage the environment and human health. The raw materials they contain can contribute to environmental protection by being recycled. Old appliances and batteries must be disposed of separately. These must either be taken to a collection point for electrical appliances or batteries or handed in to the distributor.



Packaging material must be disposed of separately in accordance with the applicable laws and disposal regulations.

The deletion of personal data on the old device to be disposed of must be carried out by the end user on their own responsibility.

### Conformity and legal regulations

Lehmann Elektronik hereby declares that the product is in compliance with the essential requirements and the other relevant regulations of the EMC Directive 2014/30/EU, the RED Directive 2014/53/EU, and the RoHS Directive 2011/65/EU. The complete declarations of conformity can be found on the Internet at [www.lehmannweb.de](http://www.lehmannweb.de).



**REACH Regulation** In terms of the regulation, we are a downstream user. The product is not subject to labelling. Further information can be found on the homepage.